



COMMUNITY | 20 PROFILE | 24



Welcome to St. Mary's Regional Medical Center



St. Mary's Regional Medical Center has served the healthcare needs of northwest Oklahoma for more than 100 years. The highly skilled physicians at the hospital provide primary care as well as multiple specialties, including Cardiovascular Services, Neuroscience and Spine Services, Orthopedics, Women's Health, Behavioral Health, Emergency Medicine, Outpatient Oncology Services, Robotic Surgery, Nephrology, Pulmonology, Urology, ENT, Podiatry and Physical Rehabilitation.

St. Mary's continues its pursuit of excellence once again, earning a Top Workplaces honor for the seventh year in a row from The Oklahoman. The list is based solely on employee feedback gathered through a third-party survey administered by employee engagement technology partner Energage, LLC. The anonymous survey uniquely measures 15 drivers of engaged cultures that are critical to the success of any organization, including alignment, execution and connection. The Oklahoma State Department of Health recognized the hospital with an Award of Excellence and a designation as an Oklahoma Certified Healthy Business. St. Mary's received the Best-In-State Hospitals 2024 award presented by Newsweek and Statista, the world-leading statistics portal and industry ranking provider. St. Mary's also maintained The Joint Commission Advanced Certification for Total Hip and Total Knee Replacement.

In addition, St. Mary's earned other awards and recognitions:

- Named one of America's Best Hospitals for Patient Experience, Obstetrics, Stroke Care and Minimally Invasive Surgery by the Women's Choice Award®
- Earned the American Heart Association®/American Stroke Association® Get With The Guidelines®-Rural Stroke Bronze 2023
- Earned the U.S. News & World Report Best Hospitals 2023-2024 High Performing for Knee Replacement
- Earned the Healogics® Center of Distinction award for wound care

Our Rehabilitation Institute is accredited by the Commission on Accreditation of Rehabilitation Facilities (CARF)*, and our laboratory is accredited by the College of American Pathologists (CAP).

It is our privilege to care for you and your family. We thank you for your trust and appreciate you making St. Mary's Regional Medical Center your hospital of choice.

Best Regards,

Rex Van Meter

Rex Van Meter

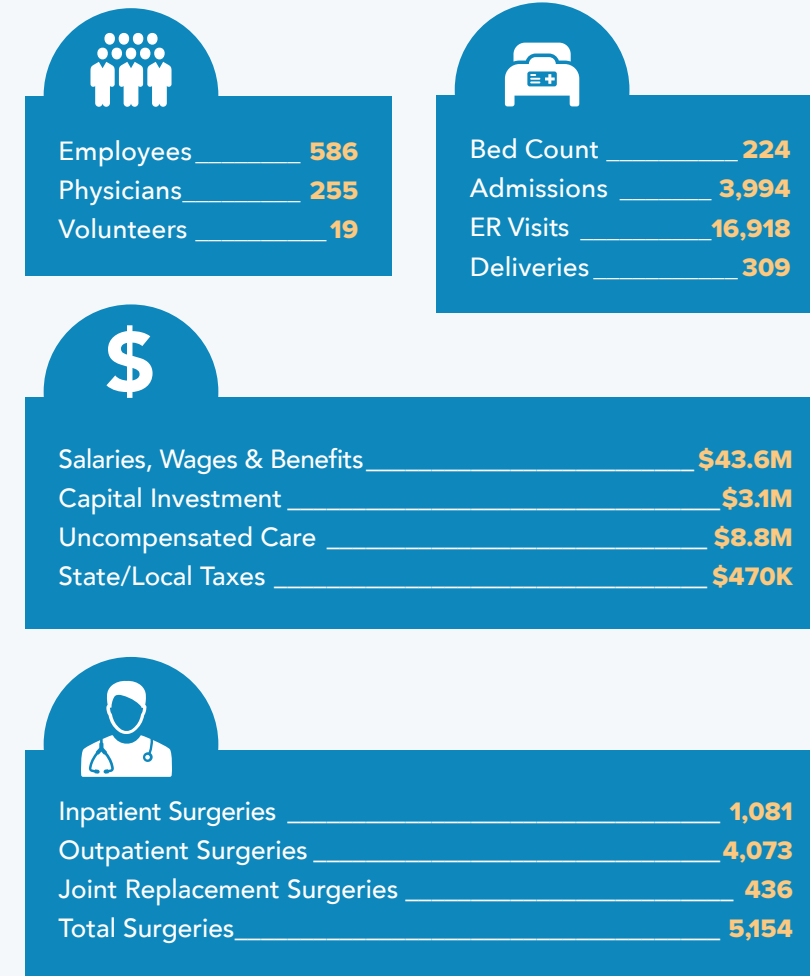
Chief Executive Officer

* Rehabilitation Institute ranked in the top 10 percent of 868 inpatient rehabilitation facilities in the U.S. by Uniform Data System for Medical Rehabilitation, 2020

St. Mary's Boosts Local Economy in 2023

St. Mary's Regional Medical Center is proud to contribute to the health of the community and boost the local economy. Our medical center offers a wide range of rewarding career opportunities, as well as educational support and training for the next generation of healthcare providers, including physicians, nurses, therapists and others in the allied science programs.

St. Mary's Regional Medical Center



The SMRMC Network

St. Mary's Physician Associates

(Affiliated with St. Mary's Regional Medical Center)

- St. Mary's Cardiology
- St. Mary's Complete Family Care
- St. Mary's Enid Medical Associates
- St. Mary's Family Care of Enid
- St. Mary's Family Medicine North
- St. Mary's Family Physicians
- St. Mary's General Surgery and Facial Plastic Surgery
- St. Mary's Internal Medicine
- St. Mary's Northwest Oklahoma Cardiovascular Consultants
- St. Mary's Orthopedic Clinic
- St. Mary's Pediatrics
- St. Mary's Physician Associates at Ponca City
- St. Mary's Podiatry Clinic
- St. Mary's Psychiatry
- St. Mary's Springs Internal Medicine Clinic
- St. Mary's Women's Health & Wellness

Inpatient and Outpatient Services

- Behavioral Health
- Cardiology
- Diagnostic and Interventional Radiology
- Emergency Medicine - Level III Trauma Center and Level II Stroke Center
- Gastroenterology
- General Surgery/Robotic Surgery
- Inpatient Rehabilitation Unit
- Nephrology
- Neurosciences - Neurosurgery and Neurology
- Oncology
- Orthopedics
- Otolaryngology
- Podiatry
- Pulmonology
- Radiology
- Rehabilitation
- Urology
- Women's Services - OB/GYN and 3D Mammography
- Wound Care and Hyperbaric Medicine



Partnerships/Sponsorships:

- Enid Chamber of Commerce
- Alzheimer's Walk
- American Cancer Society® - Relay for Life® sponsorship
- Chisholm School Foundation
- Chisholm HS Athletics
- 4R Kids - Gala Sponsor
- Hedges Speech and Hearing
- Hospice Circle of Love
- Meals in Heels - RSVP (benefits Meals on Wheels)
- Cherokee Strip Celebration
- Out of the Darkness - Suicide Prevention Walk
- Triangle Great Land Run
- Vance AFB - Enlisted Appreciation
- YMCA - Back a Youth
- YWCA - Purses with Purpose luncheon sponsor
- Enid Higher Education Council - Scholarship fund
- Enid Public Schools Foundation
- Rural Health Projects Walk This Way
- AFJROTC OK



Advanced Total Hip & Knee Replacement



For more information about our community impact, call our marketing department at **580-249-3665**. Or visit stmarysregional.com



St. Mary's Regional Medical Center
305 South 5th Street
Enid, Oklahoma 73701