



"Everyone who worked with me was very kind & treated me with respect."

Accommodations for Family

The Rehabilitation Team recommends that family members do not spend the night at the Rehab Unit except under special circumstances in which 24-hour direct supervision is required, the distance from home precludes driving back and forth or other extenuating circumstances.

St. Mary's offers accommodations at low rates through the Hospitality House. Space is limited. Let us know if you would like more information.

The Rehabilitation Program is accredited by the Commission on Accreditation of Rehabilitation Facilities (CARF) for the following programs:


- Inpatient Rehabilitation Programs – Hospital (Adults) with Stroke Specialty
- Brain Injury Inpatient Rehabilitation Programs – Hospital (Adults)

Also accredited by The Joint Commission.

 The
Rehabilitation Institute
AT ST. MARY'S REGIONAL
MEDICAL CENTER

I can do this.

Report Card

 The
Rehabilitation Institute
AT ST. MARY'S REGIONAL
MEDICAL CENTER

I can do this.

305 S. 5th, Enid, OK 73701
580-233-6100 www.stmarysregional.com

Physicians are independent practitioners who, with limited exceptions, are not employees or agents of St. Mary's Regional Medical Center. The hospital shall not be liable for actions or treatments provided by physicians.



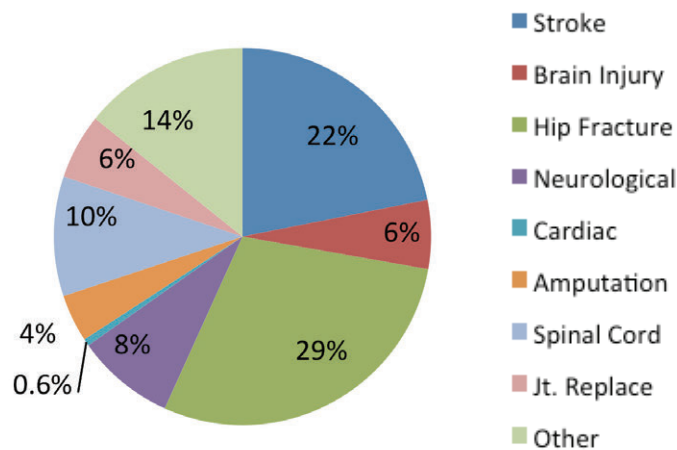
Intensity and Scope of Service

Persons served will receive a minimum of three hours of therapy at least five days per week. Additional therapy may be provided on the weekend per physician order. Physical, Occupational and/or Speech Therapy may be provided depending on your plan of care.

The Rehabilitation Institute serves people 18 years of age or older who have a variety of disabling conditions. Our practice does not serve patients who are ventilator-dependent or comatose. Persons with complete spinal cord injuries or burn management as their primary diagnosis will be considered on a case-by-case basis.

Data Collected 2015: 348 cases

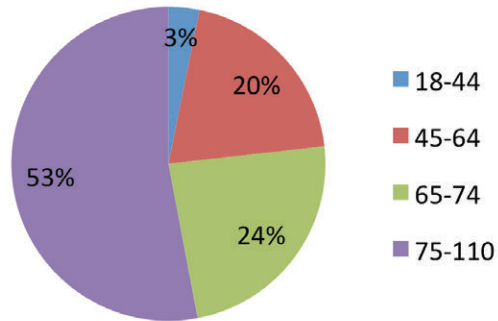
Diagnosis Treated



Average Length of Stay

All Patients	13.9 Days
Stroke	15.6 Days
Brain Injury	17.5 Days
Hip Fracture	13.9 Days
Spinal Cord Injury	13.5 Days

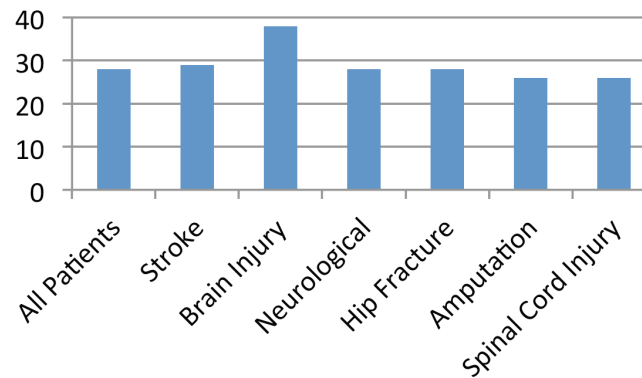
Patient Age by Percentage



Average Functional Gain

FIM (Functional Independence Measure) is a numerical score that reflects the amount of care a patient requires. FIM gain represents the amount of functional improvement the patient achieves during his/her program.

Average Functional Gain



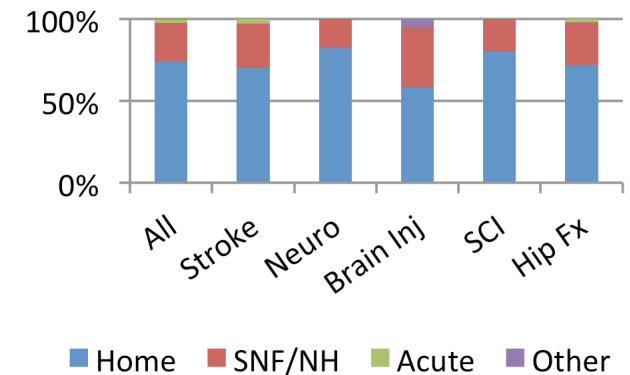
Goal Achievement

We aim to help you achieve the highest possible level of independence.

Home is where the heart is ...

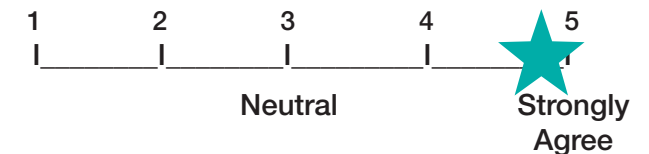
Being able to return home is an important rehab outcome. The rehab team will work with the patients to help them to achieve the highest possible level of independence at discharge. When patients are not able to return home, we assist in making other appropriate plans for discharge.

Discharge Destination by Diagnosis



Patient Satisfaction

(80% Return Rate)
(4.86 out of 5.0 points)
"I would recommend the Rehabilitation program to my family and friends."



"They taught an old dog a new trick - it can be done." -Sharron
"Thank you for giving me the courage to do this when I was full of fear." -Lila